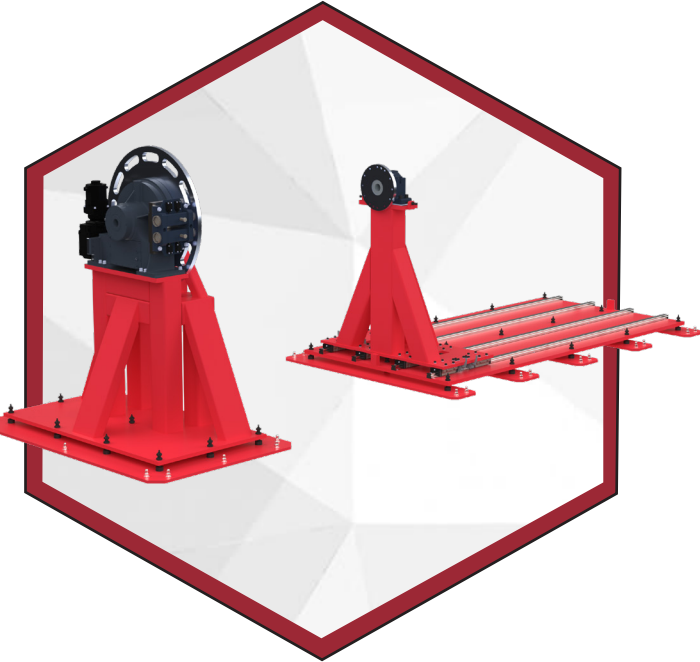


# SINGLE AXIS

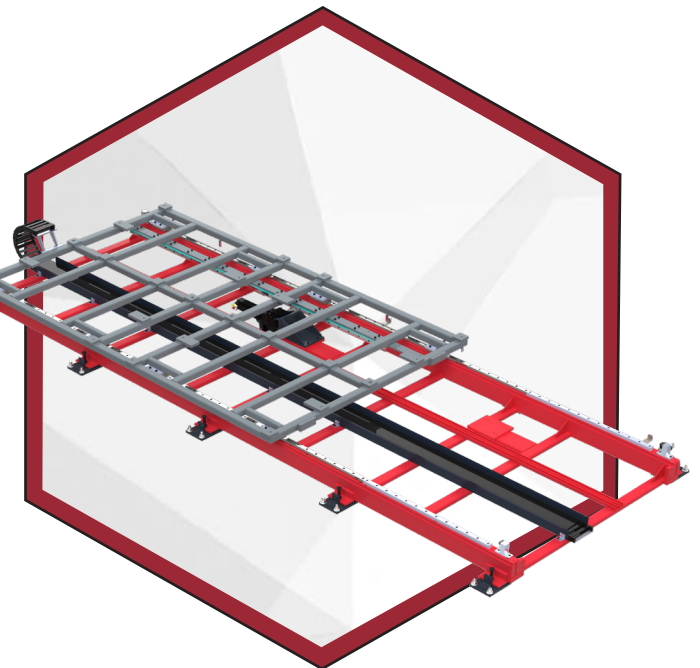
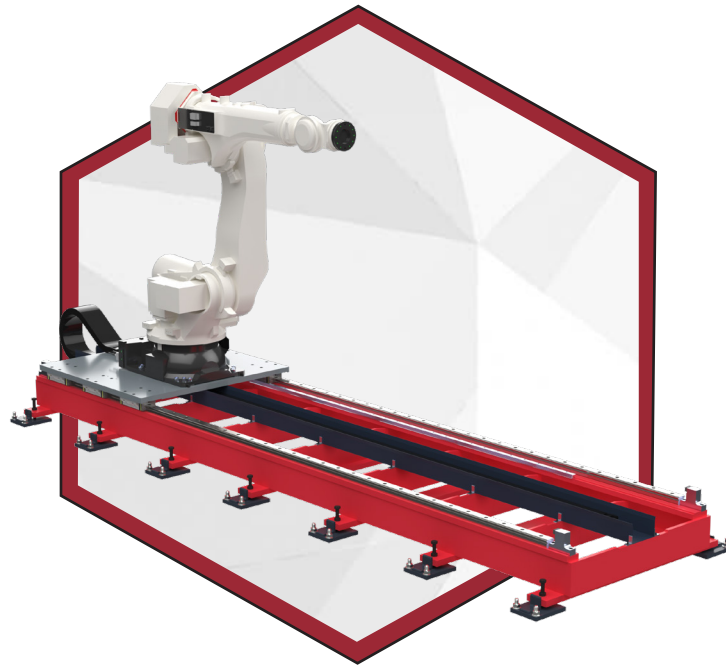


## TRUNNION POSITIONER

Our adjustable single axis trunnion positioners are custom engineered solutions that are capable of handling payloads in excess of 30,000 lbs. or more. The complete robotic head and tailstock positioning system utilizes our standard Motion Index Drives precision indexing equipment, complete with a heavy duty constructed base frame, riser bases or fixture backbones.

## ROBOT TRANSFER UNIT

Our 7th Axis system can be engineered to any length that the customer requires and manufactured in an elevated, floor mounted or inverted configurations. Our design that incorporates machined keyed ends allows for sections to be added or removed easily for re-purposing. Each unit can be equipped with adapters to fit your specific robot or servo motor requirements.



## TOOL TRAY TRANSFER UNIT

This compact, low-profile solution is designed to precisely shift tooling or parts linearly over customer-specified distances. With the ability to run multiple models on the same production line, it allows the reuse of assets. They are capable of handling extremely heavy loads in a very smooth and controlled manner. It features an AC motor with encoder or servo motor control, allowing for infinitely programmable positioning and extremely high accuracy.



INFO@LAZERARC.COM

P 248-743-9999 F 248-743-0749

LAZERARC.COM INFO@LAZERARC.COM



# ROBOTIC POSITIONERS

SPECIALIZING IN CUSTOM ENGINEERED SOLUTIONS

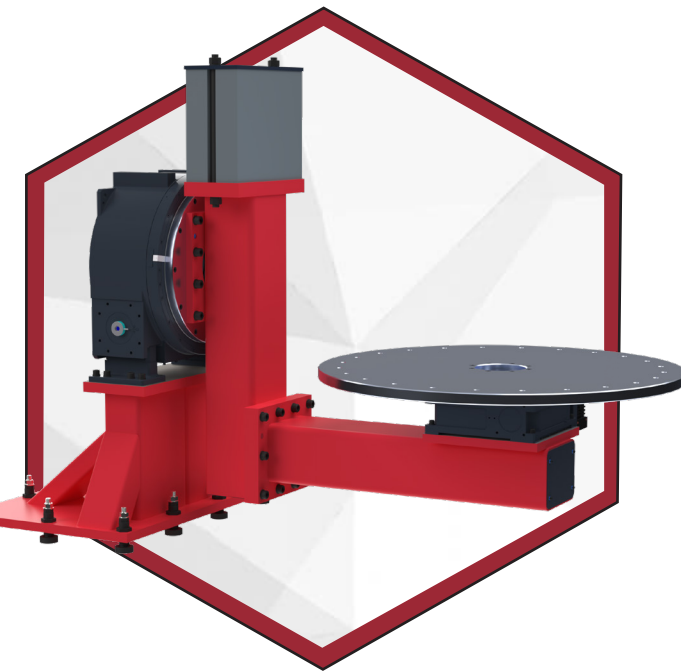
SINGLE AXIS | 2-AXIS | 3-AXIS | 5-AXIS



# 2-AXIS

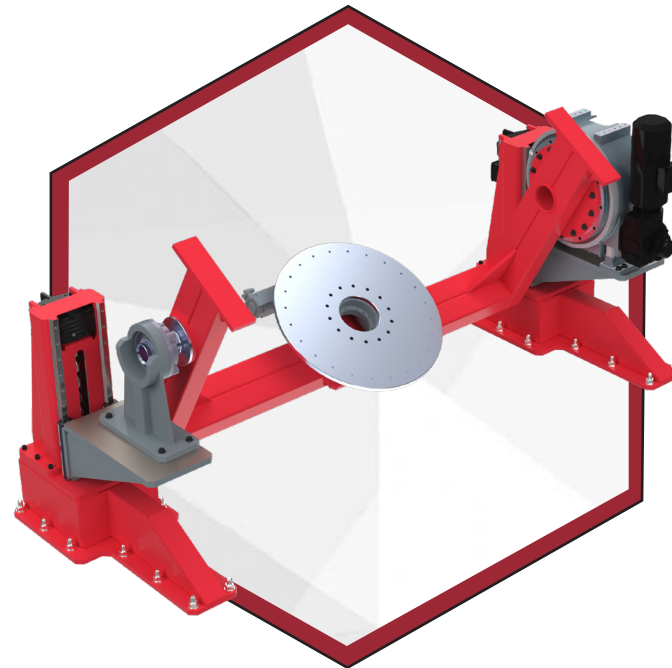
## SKY HOOK

Featuring advanced zero backlash barrel cam systems on its auxiliary axes, the Skyhook offers exceptional positional accuracy, with two high-fidelity indexers achieving a combined accuracy of  $\pm 21$  arc seconds. This precision ensures consistently high-quality welds and improves the repeatability of the welding process. The system's fully sealed cam indexers facilitate vertical and upside-down operations, protecting internal components from particulate contamination and offering a maintenance-free, long-lasting solution.



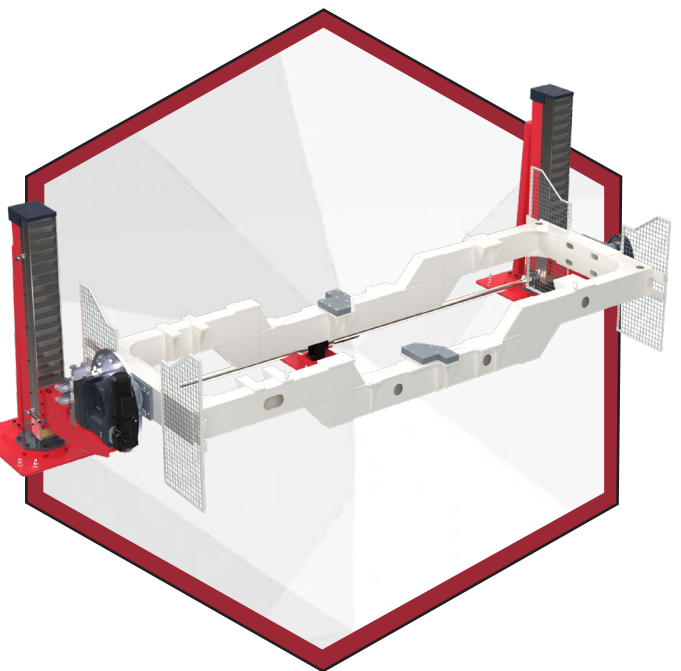
## DROP CENTER VH POSITIONER

The Drop Center positioning system is adept at handling longer or larger components, offering a full 360° horizontal rotation capability. This two-axial assembly features a rotationally precise bridge, strategically placed between the headstock and tailstock, to create a drop center configuration optimized for specific workpieces and operational requirements.



## LIFT AND ROLLOVER

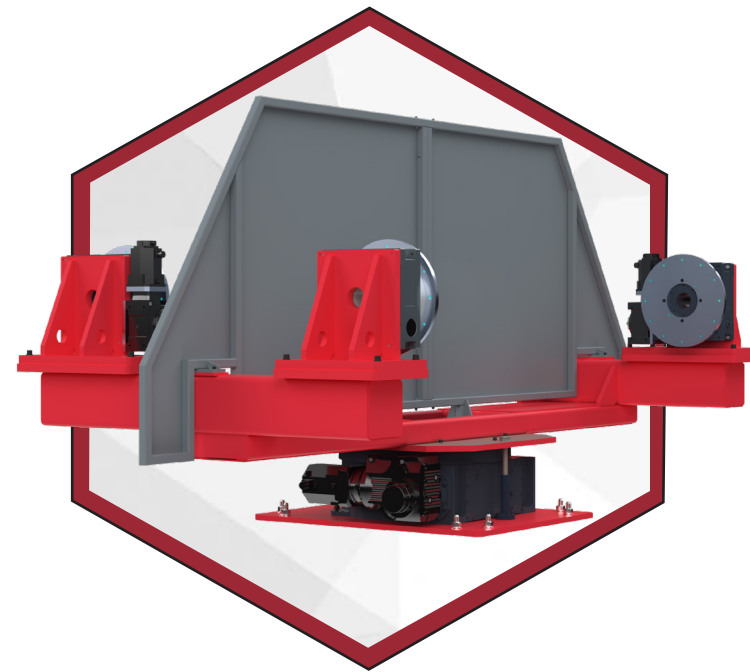
Precision lift and rollover positioning systems are specialized equipment designed for industries where high precision in positioning and handling of components is paramount. These systems offer a unique combination of vertical lifting and rotational movement, allowing for precise control over the placement and orientation of parts.



# 3-AXIS

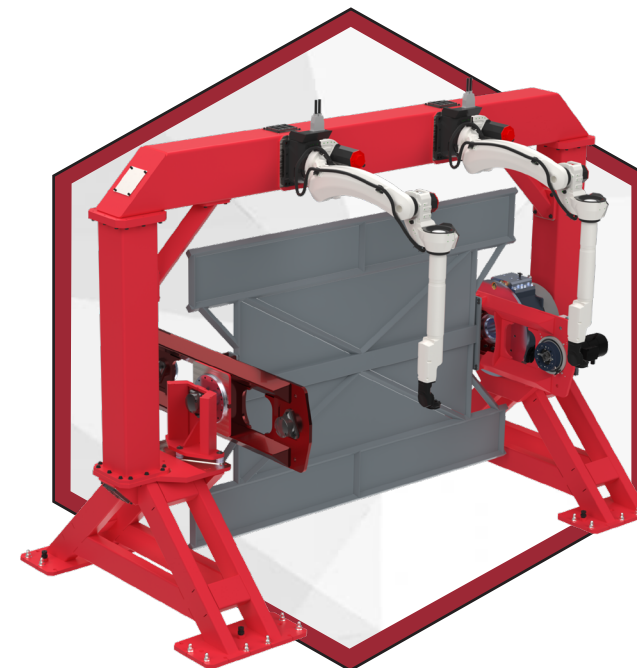
## H-FRAME

The DR-TR 3-axis H-Frame robot weld positioning system offers a zero-backlash servo driven cam system that does not require additional wedge lock or shot pin systems to achieve high accuracy on the (zero) exchange axis. These H-Frame trunnion positioning systems utilize the TR Series servo gear head with high torque capacity. For the dual trunnion headstocks, allows for a 2 second 180° rotation on a load of up to 4000lbs per side and 3 meters between faceplates.



## FERRIS WHEEL

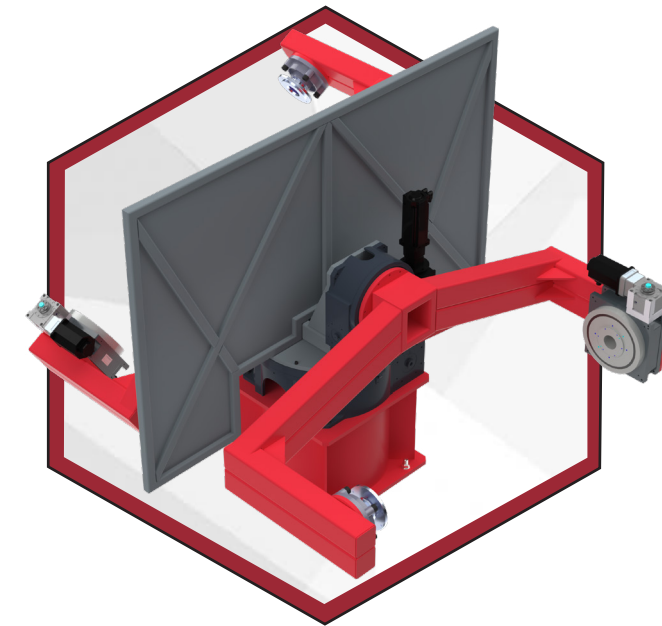
The Ferris Wheel Robotic Weld Positioner operates on a three-axis range of motion, facilitating a horizontal rotation, tilting and vertical load adjustments between two trunnion axes on each side of a central "Sweep" Axis. These axes are servo driven, optimizing cycle time by enabling the parts to be positioned while the trunnion stations rotate over/under the sweep axis. The trunnion is fully synchronized with the movements of the robot, to facilitate circumferential welds while the part rotates.



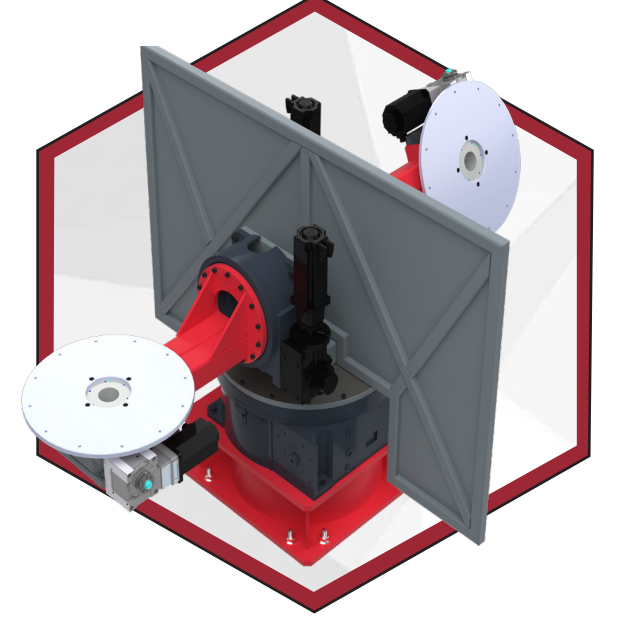
# 5-AXIS

Designed to manipulate an extensive range of complex component geometries by lifting and tilting to various precise degrees for robotic operations, offering greater flexibility to machine from all sides.

## 5-AXIS POSITIONERS



## L-SKY HOOK



## BENEFITS

Operational efficiency by allowing for simultaneous part loading and welding.

Improves safety and quality.

Allows for quick changes between different welding tasks, accommodating short runs and varying part requirements.

Improved weld quality by maintaining a continuous operation.

## KEY FEATURES

**ZERO BACKLASH CAM INDEXERS:** Ensures precise positioning without play, enhancing both accuracy and repeatability.

**HIGH LOAD CAPACITY:** Designed to handle heavy loads without compromising precision.

**ROBUST CONSTRUCTION:** High-quality/heavy duty materials and components for demanding industrial environments.

**CUSTOMIZATION:** Our engineering team can customize the positioners to meet specific requirements, ensuring optimal integration and performance in your operations.

**AUX AXIS:** Capable of being adapted to utilize most major robot brands.